

Independent two frames with base set by user



Mobile imaging unit can be provided with a contactless display Tablet PC

INTELLIGENT LIGHT GATES LS 07

TECHNICAL PARAMETERS

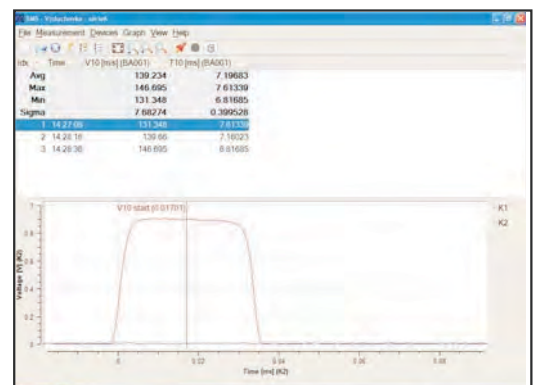
Measuring the projectile velocity :	- range 50-2000 m/s - resolution 0,2 m/s - accuracy 1%
Measuring the rate of fire	- range 60-3000 rpm - resolution 1 rpm - accuracy 1%
Projectile calibre range	4 up to 20 mm (maximal projectile calibre tested cartridges was 20x102 mm) (The device supports measuring the velocity of thrown objects up to the size of 100x100 mm)
Area picked-up	isosceles triangle, base 1000 mm, height 1380 mm for LS07 (LAS Modification) rectangle of 1000 mm x1380 mm for (LED Modification)
Base	2 m or set by user
Height of axis	adjustable within 1100 up to 1700 mm
Interface	10/100 Ethernet, WiFi (IEEE 802.11b), RS232
Range of temperature	+5°C up to +50°C
Mains feed	230 V / 50 Hz (12 V or 24 V optionally)



Detail of electronic box included Wi-Fi module

Software BMS v.2.2.

Supported by OS:	Windows 98, 2000, XP
HW configuration recommended :	Pentium II/366, 128 MB RAM, 10GB HDD (or better configuration)
Evaluated values:	actual, minimal, maximal and mean values of velocity and rate of fire, time of flying through between gates, time among shots and other quantities in accordance with requirements of device users.
Output:	protocol or text file



Software BMS v.2.2.